

FRONTyard



1. CANAL PARK (2011)



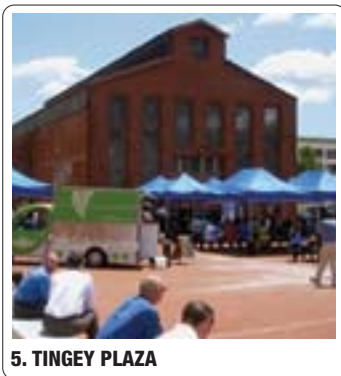
2. JOY EVANS BEFORE & AFTER SCHOOL DAY CARE



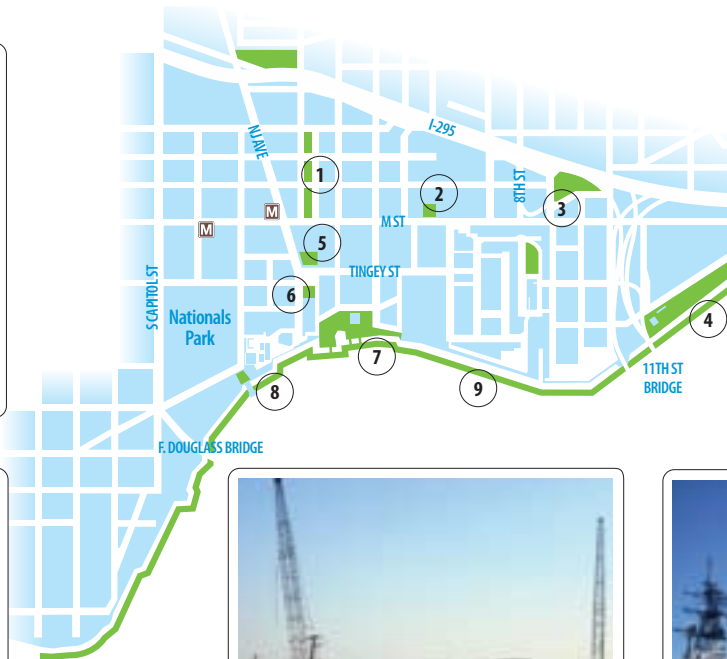
3. VIRGINIA AVE COMMUNITY GARDEN



4. BOATHOUSE ROW



5. TINGEY PLAZA



6. TINGEY SQUARE



7. THE YARDS RIVERFRONT PARK (2010)



8. DIAMOND TEAGUE PARK (2009)



9. ANACOSTIA RIVERWALK TRAIL

DEVELOPMENT SUMMARY – 2Q 2009

	EXISTING	UNDER CONSTRUCTION	PLANNED	TOTALS
Office Sq. Ft.	6,552,967	379,000	8,705,747	15,607,714
Retail Sq. Ft.	148,280	23,000	847,065	1,018,345
Residential Units	2,067	313	6,675	9,055
Hotel Rooms	204	0	921	1,125
Total Sq. Ft.	9,921,493	805,000	23,274,565	34,001,058
Est. Total Cost	\$2.3 billion	\$260 million	\$5.2 billion	\$7.7 billion

ENVIRONMENTAL SUSTAINABILITY

In the Capitol Riverfront there are 30+ LEED certified existing or planned buildings, the largest green roof in DC, a LEED for Neighborhood Development at The Yards, the largest LEED for homes for-sale neighborhood in the nation at Capitol Quarter, the first LEED certified stadium in the country, 4 new parks and innovative streetscapes such as permeable pavers.